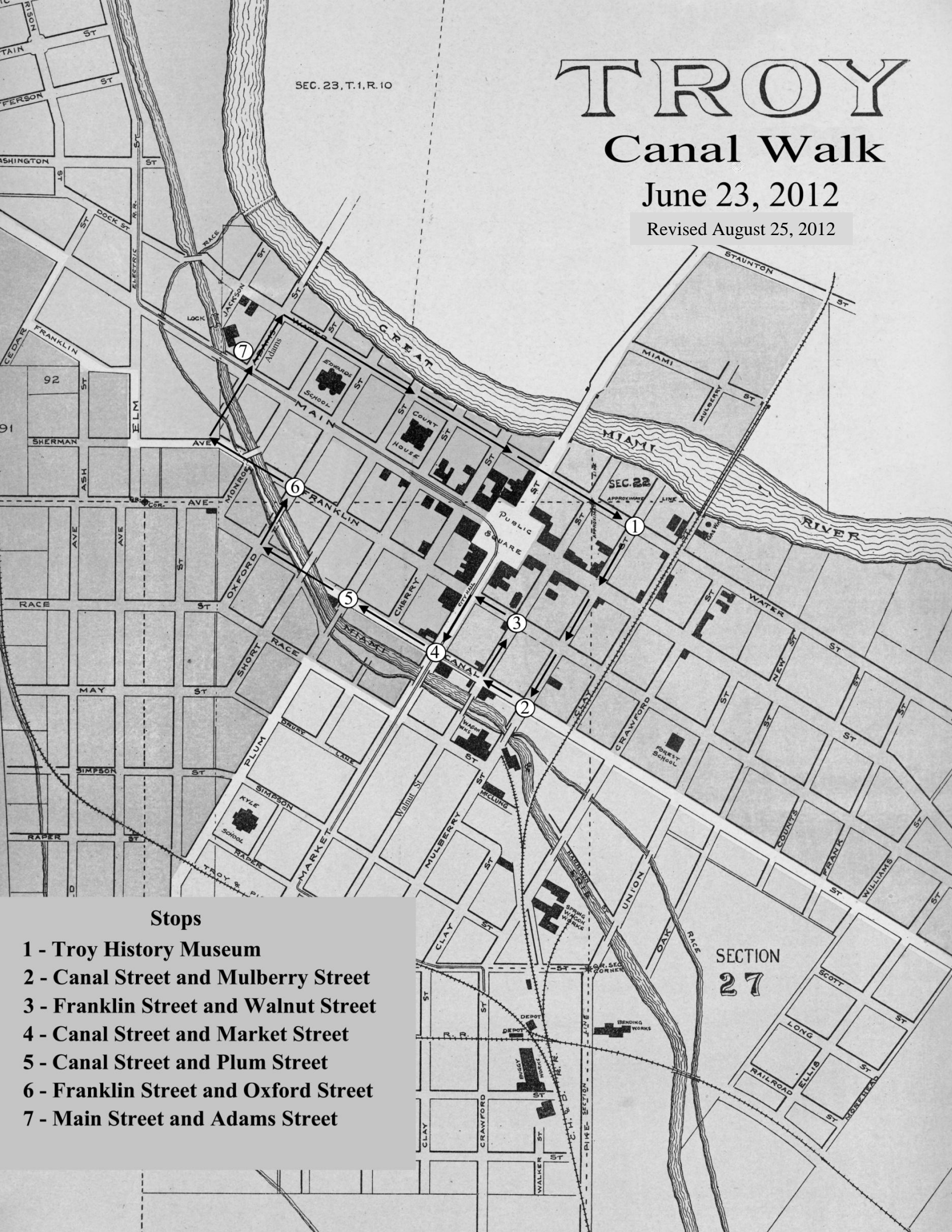


TROY

Canal Walk

June 23, 2012

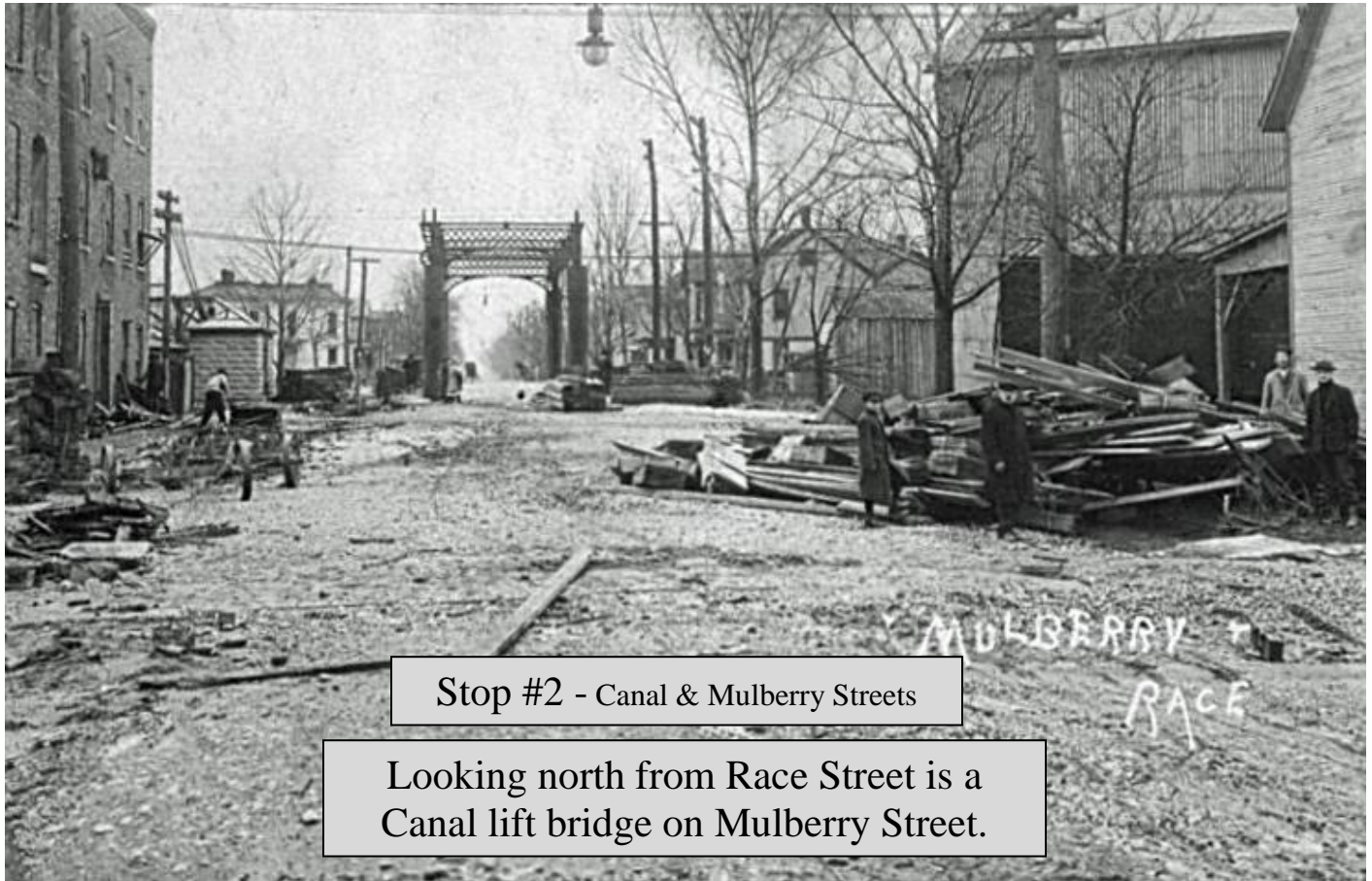
Revised August 25, 2012



Stops

- 1 - Troy History Museum
- 2 - Canal Street and Mulberry Street
- 3 - Franklin Street and Walnut Street
- 4 - Canal Street and Market Street
- 5 - Canal Street and Plum Street
- 6 - Franklin Street and Oxford Street
- 7 - Main Street and Adams Street

Franklin Street



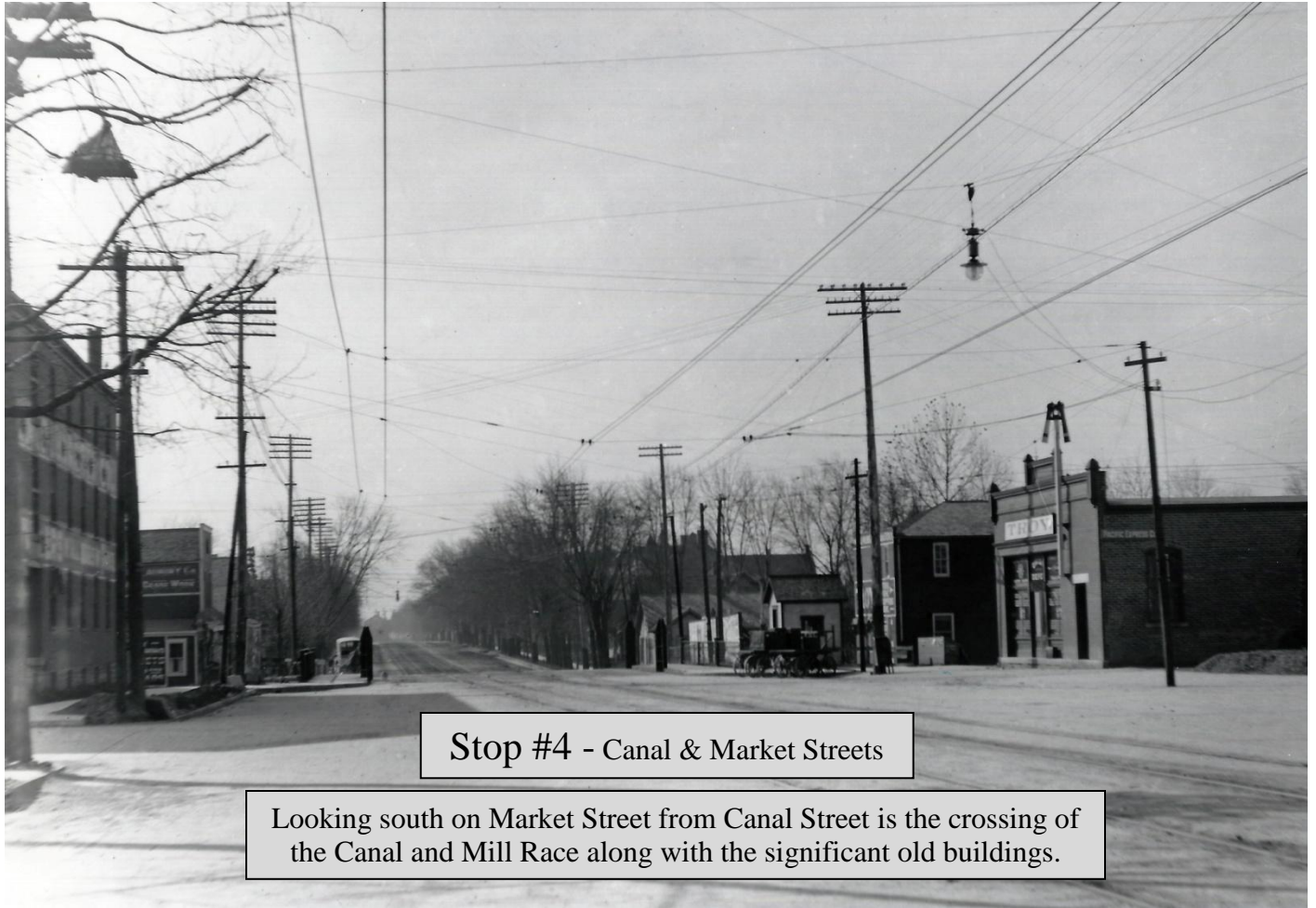
Stop #2 - Canal & Mulberry Streets

Looking north from Race Street is a Canal lift bridge on Mulberry Street.



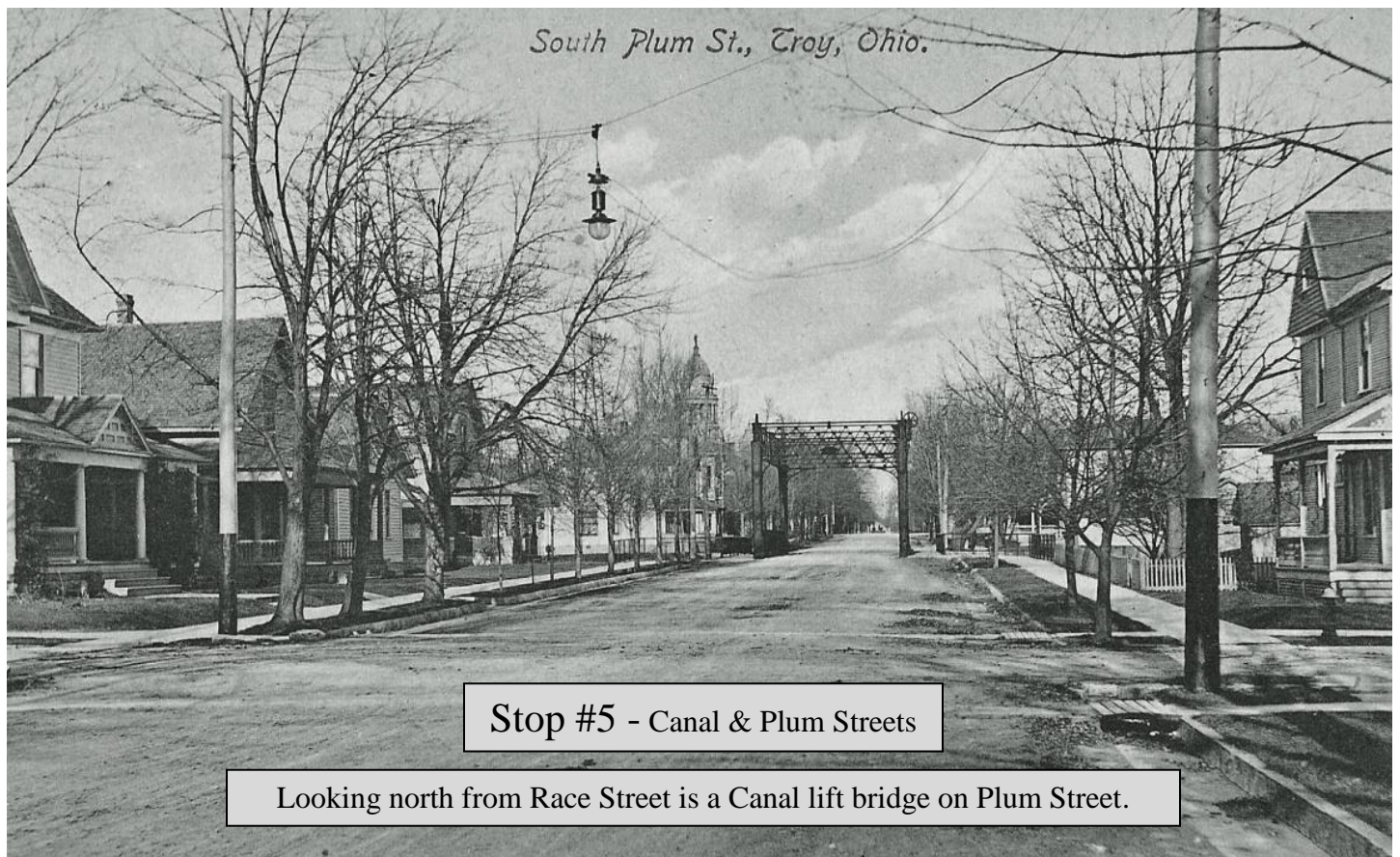
Stop #3 - Franklin & Walnut Streets

Old Trinity Episcopal Church at Southwest corner of Franklin and Walnut Streets. Now the Barbel Adkins Family Abuse Shelter, may have a connection to the Canal. A freed black woman, “Auntie Green” was attacked in the Church by slave catchers who wanted to sell her back into slavery. She eluded them and was started on her way to Canada by the “network” which definitely existed in Troy. That group used canal boats docked at the nearby repair basin to stow away fugitives and transport them north to Lake Erie and freedom.



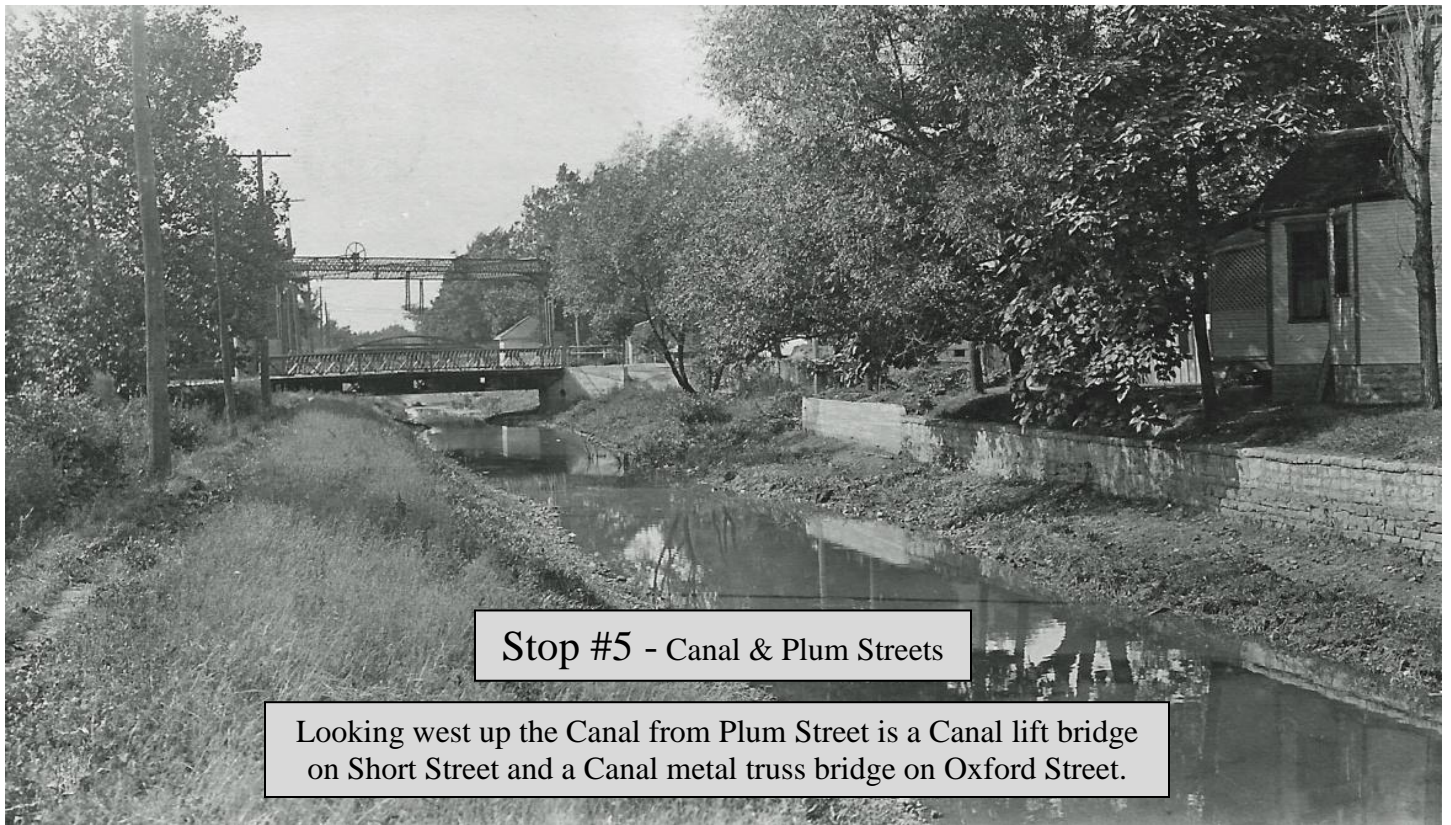
Stop #4 - Canal & Market Streets

Looking south on Market Street from Canal Street is the crossing of the Canal and Mill Race along with the significant old buildings.



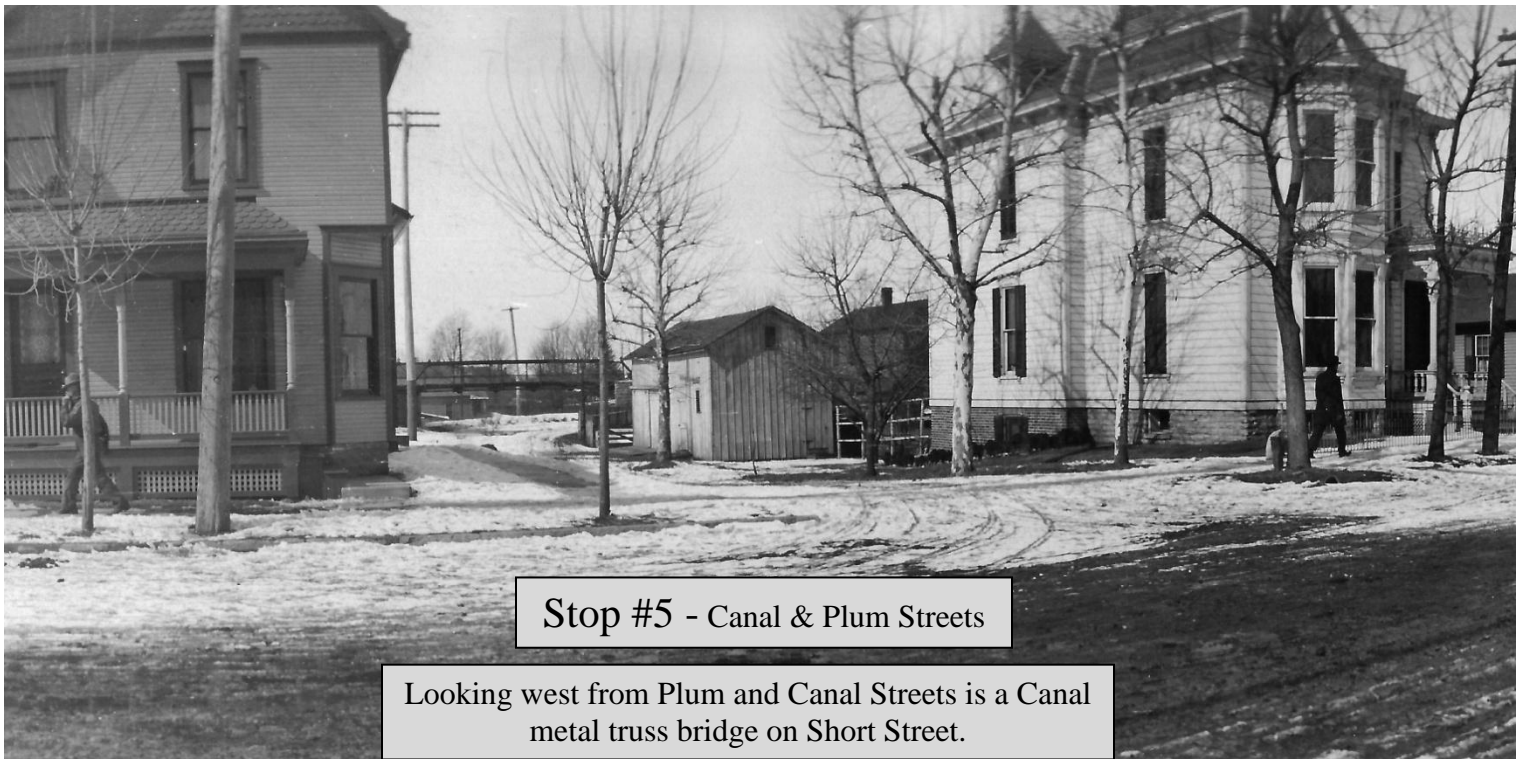
Stop #5 - Canal & Plum Streets

Looking north from Race Street is a Canal lift bridge on Plum Street.



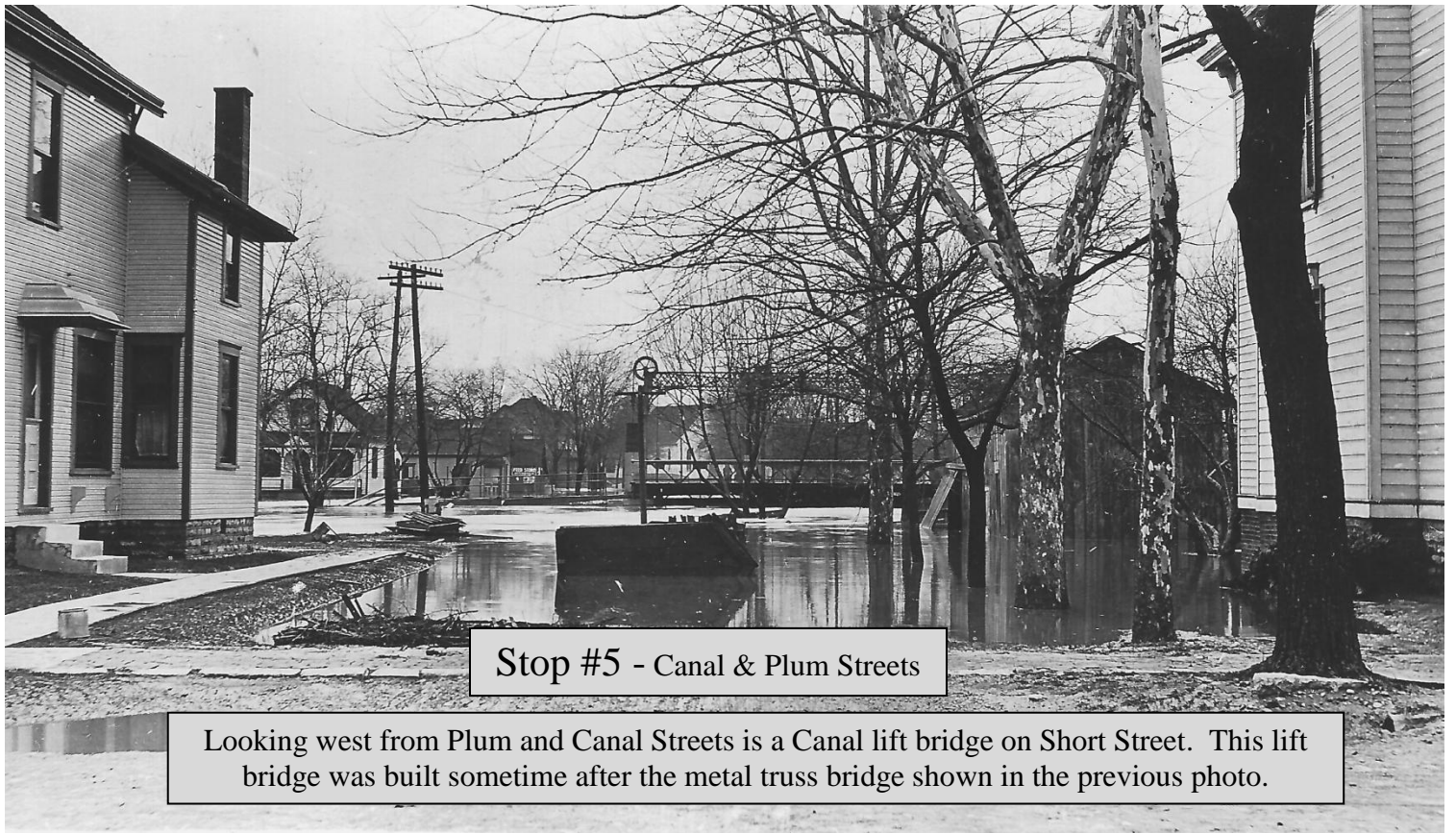
Stop #5 - Canal & Plum Streets

Looking west up the Canal from Plum Street is a Canal lift bridge on Short Street and a Canal metal truss bridge on Oxford Street.



Stop #5 - Canal & Plum Streets

Looking west from Plum and Canal Streets is a Canal metal truss bridge on Short Street.



Stop #5 - Canal & Plum Streets

Looking west from Plum and Canal Streets is a Canal lift bridge on Short Street. This lift bridge was built sometime after the metal truss bridge shown in the previous photo.



Stop #6 - Franklin & Oxford Streets

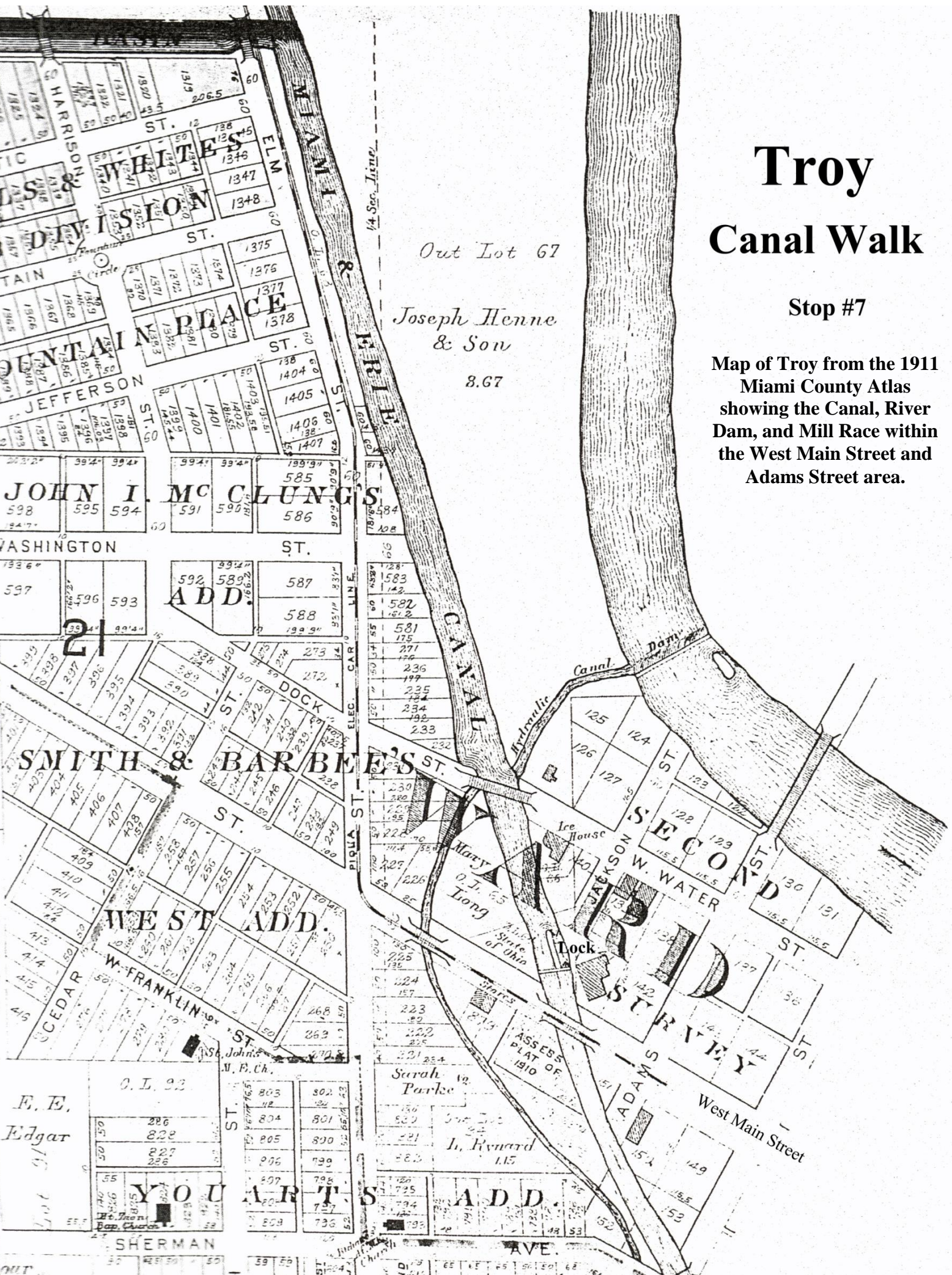
Looking west up the Canal from a point west of Short Street is a Canal metal truss bridge on Oxford Street.

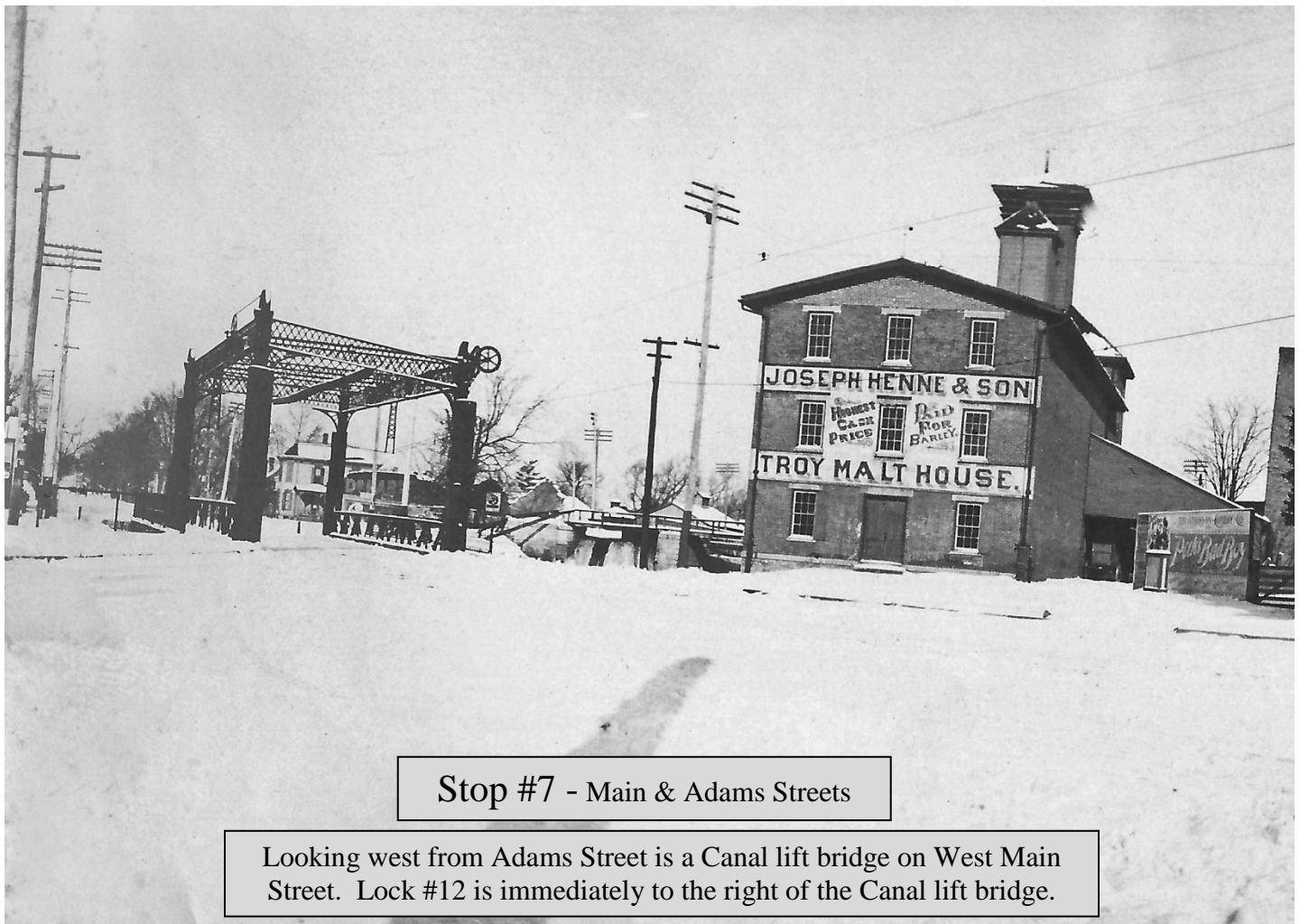
Troy

Canal Walk

Stop #7

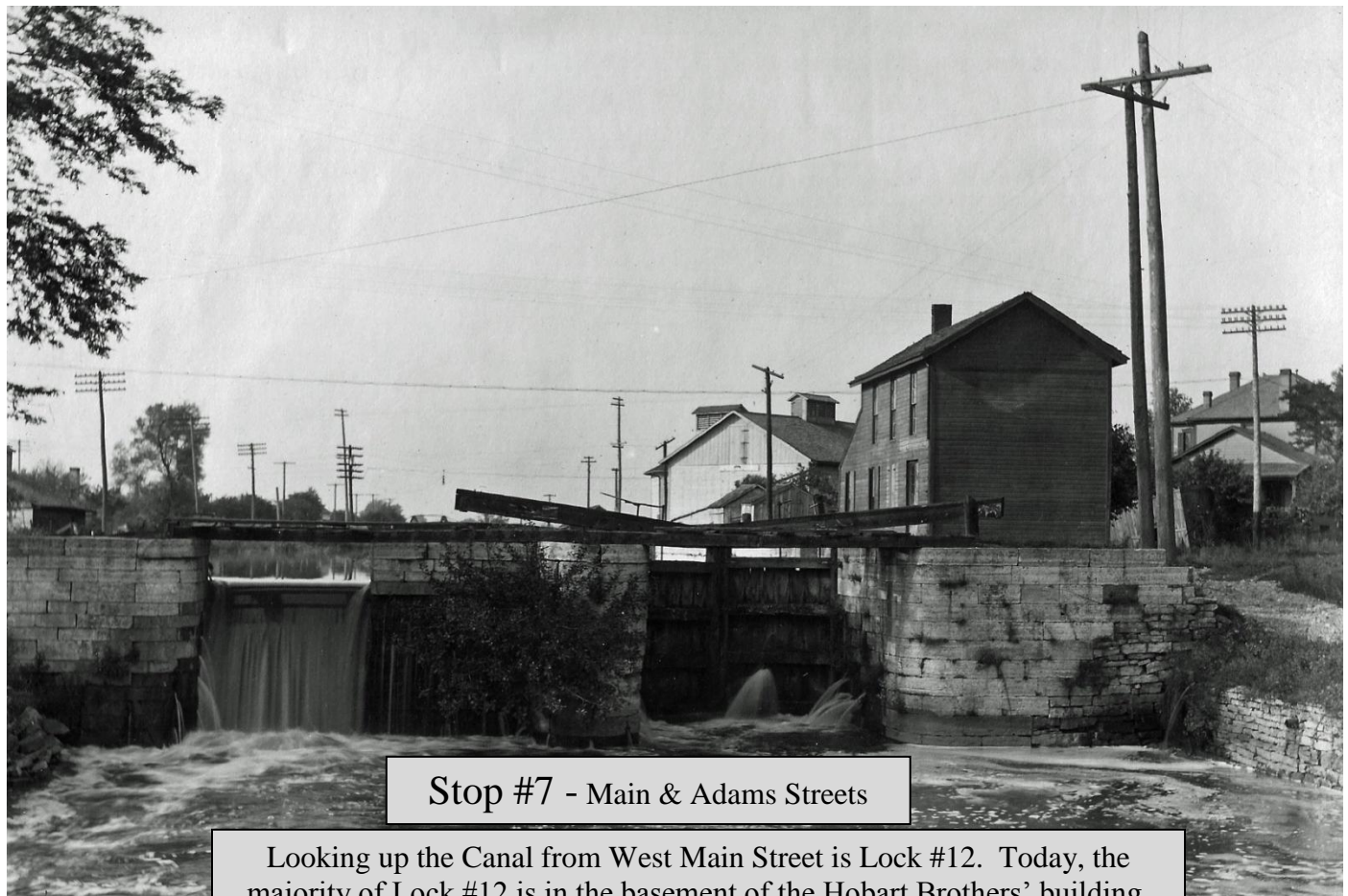
Map of Troy from the 1911
Miami County Atlas
showing the Canal, River
Dam, and Mill Race within
the West Main Street and
Adams Street area.





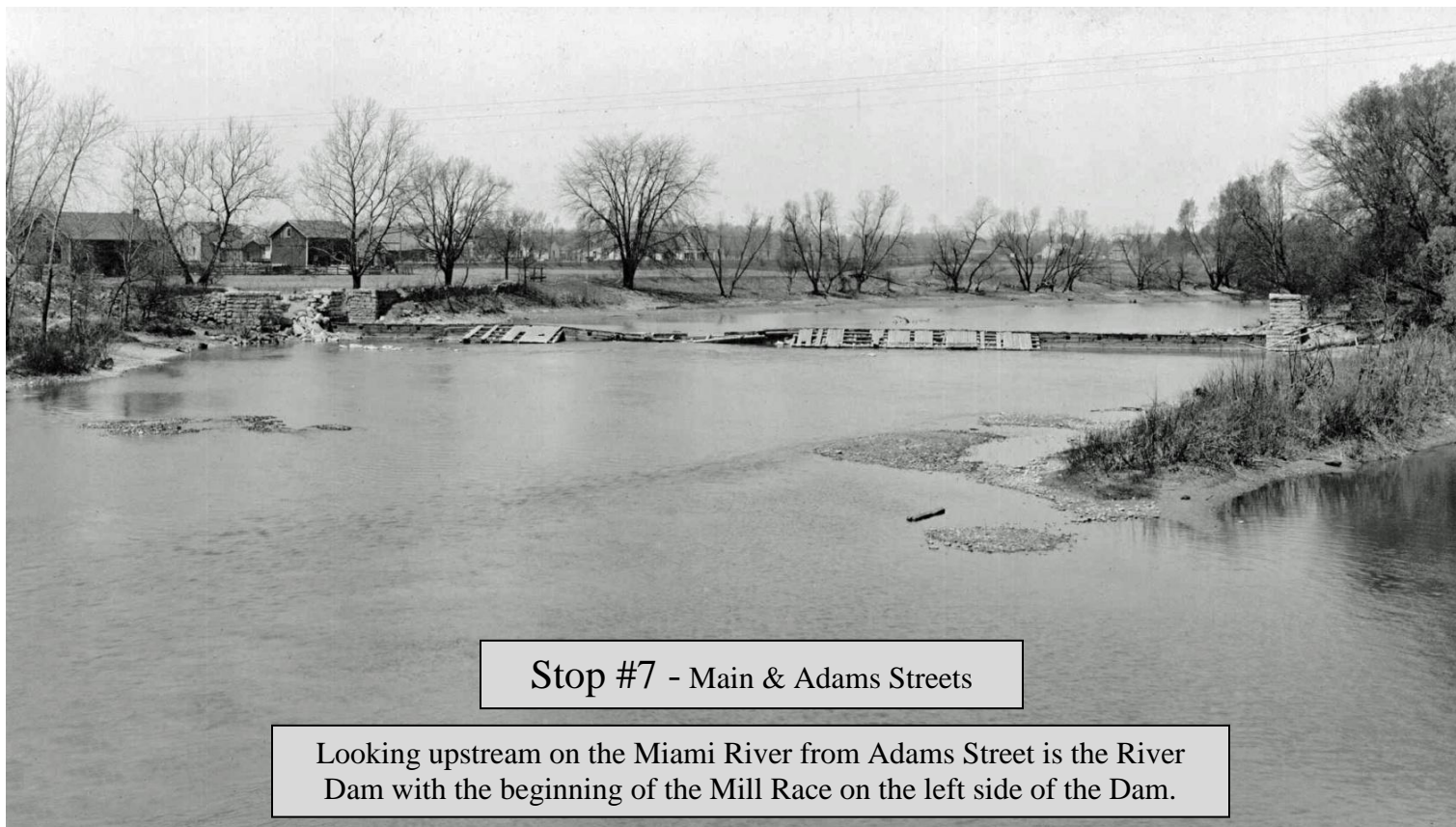
Stop #7 - Main & Adams Streets

Looking west from Adams Street is a Canal lift bridge on West Main Street. Lock #12 is immediately to the right of the Canal lift bridge.



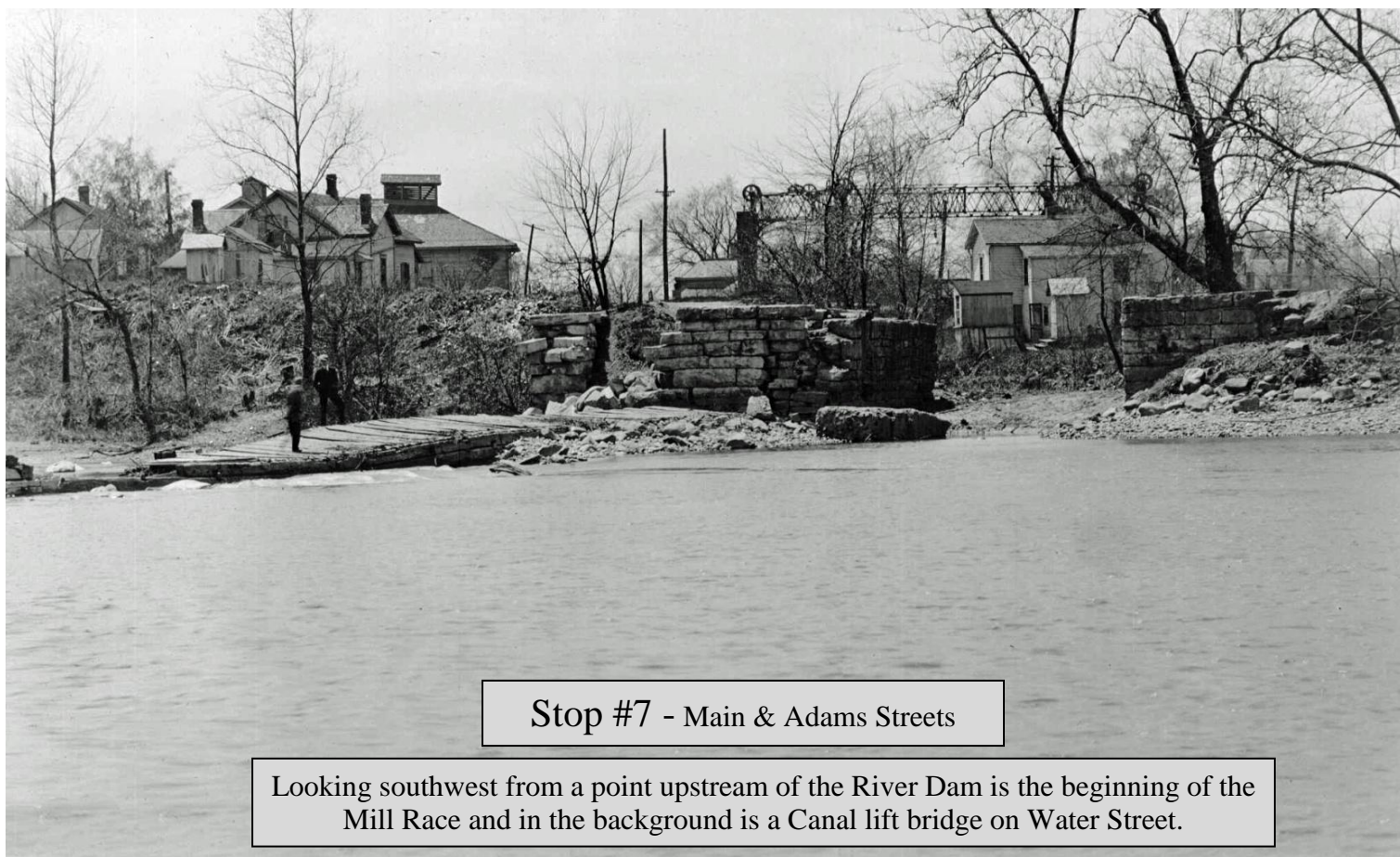
Stop #7 - Main & Adams Streets

Looking up the Canal from West Main Street is Lock #12. Today, the majority of Lock #12 is in the basement of the Hobart Brothers' building.



Stop #7 - Main & Adams Streets

Looking upstream on the Miami River from Adams Street is the River Dam with the beginning of the Mill Race on the left side of the Dam.



Stop #7 - Main & Adams Streets

Looking southwest from a point upstream of the River Dam is the beginning of the Mill Race and in the background is a Canal lift bridge on Water Street.